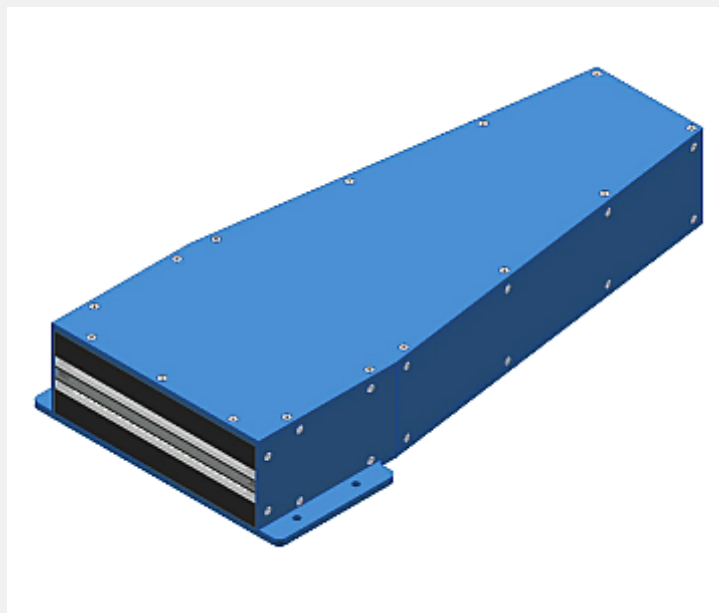


L-LAS Series

► L-LAS-RL-150-VIS-...

- Reference distance 30 mm
- Working range typ. 30 mm \pm 5 mm
- CCD line detector (256, 514, or 1024 Pixel)
- LED illumination (visible, super-bright white-light LEDs)
- External teach button, potentiometer for toleranz setting
- RS232 interface and Windows® user interface
- 2 digital inputs, 3 digital outputs
- 1 analog output (voltage 0...10V)
- Switching state indication via 4 LEDs (1x grn, 2x red, 1x yel)
- Optics cover made of scratch-resistant glass
- Detection of position, width, and defective spots of the measuring object in reflective operation
- Sturdy housing, suitable for industrial use

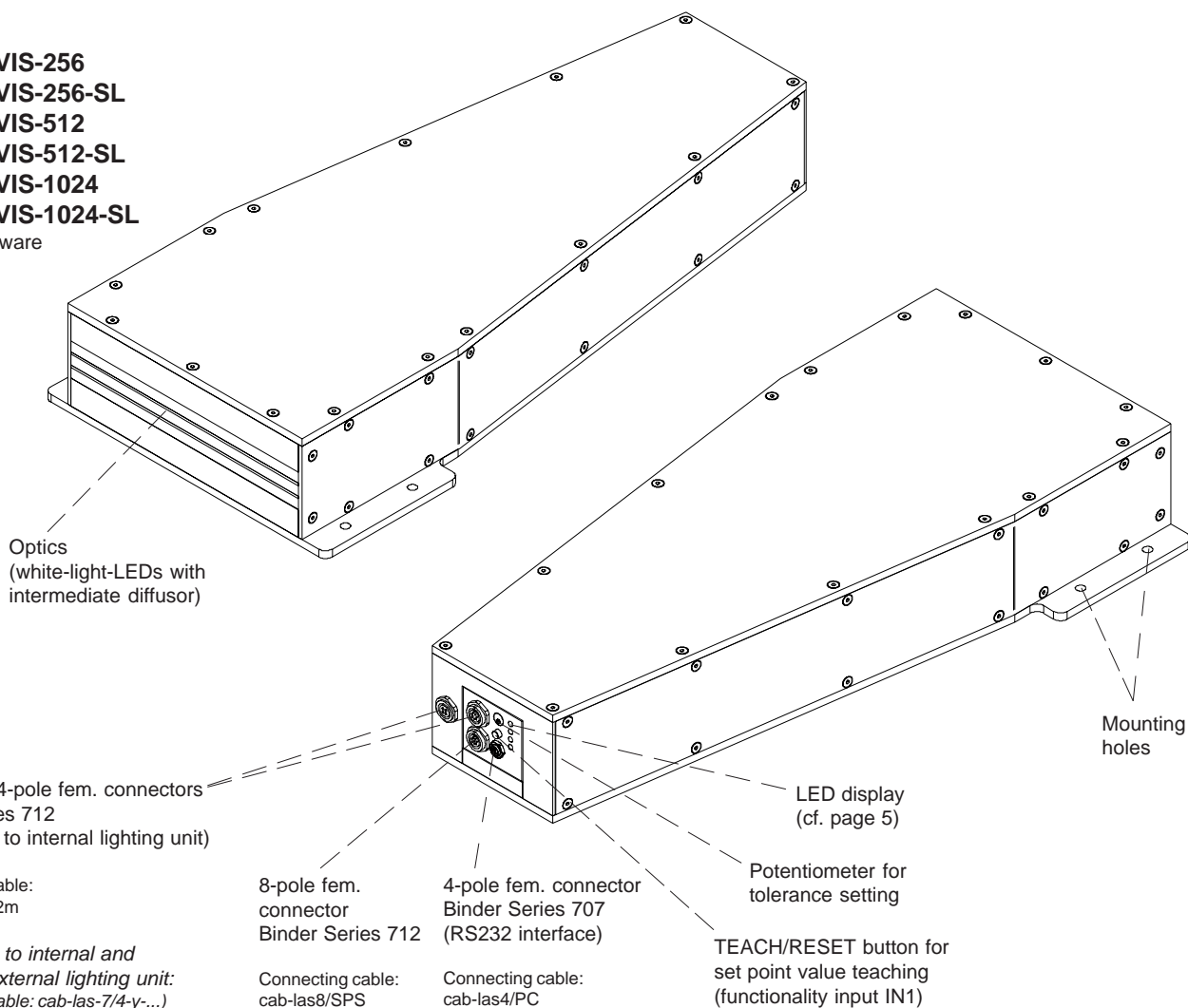


Design

Product name:

L-LAS-RL-150-VIS-256
L-LAS-RL-150-VIS-256-SL
L-LAS-RL-150-VIS-512
L-LAS-RL-150-VIS-512-SL
L-LAS-RL-150-VIS-1024
L-LAS-RL-150-VIS-1024-SL

incl. Windows® software
 L-LAS-RL-Scope



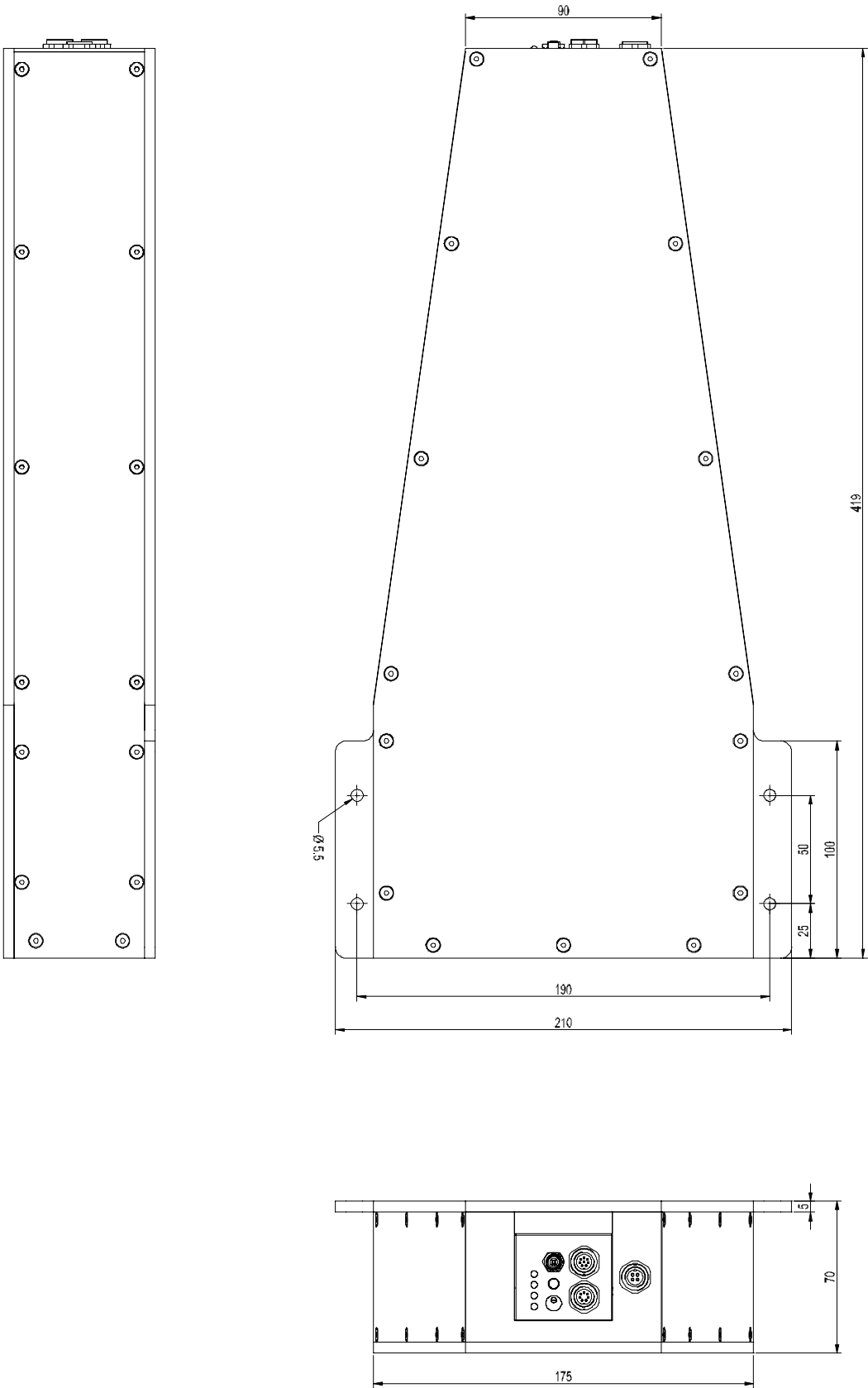


Technical Data

Model	L-LAS-RL-150-VIS-256, L-LAS-RL-150-256-SL
Reference distance	30 mm
Working distance	30 mm ± 5 mm
Measuring range	typ. 140 mm ... 150 mm
Resolution	typ. 0,6 mm
Light source	2 LED rows, each with 16 white-light LEDs (super-bright)
Optical diffusor	surface diffusing lens
Analog output	Voltage: 0 ... +10 V (wire 8, red)
Digital outputs (OUT0, OUT1, OUT2)	pnnp bright-switching/npnp dark-switching or npnp dark-switching/npnp bright-switching, adjustable under Windows®, 100 mA, short-circuit proof
Digital inputs (IN0, IN1)	Input voltage +Ub/0V, with protective circuit, IN0: External trigger IN1: Teach/Reset
Output polarity	bright-/dark-switching, can be adjusted under Windows®
Voltage supply	+20 ... +32 VDC
Current consumption	typ. 250 mA
Enclosure rating	electronics: IP54, optics: IP67
Sensitivity setting	adjustable by means of tolerance potentiometer or under Windows® via PC
Teach button	teach button at the housing for norm value setting
Intensity correction	adjustable under Windows® via PC
Operating temperature range	-10°C ... +60°C
Storage temperature range	-20°C ... +85°C
Housing material	aluminum, anodised in blue
Housing dimensions	LxWxH approx. 419 mm x 210 mm x 70 mm (without flange connectors)
Connectors L-LAS-CAM-256	8-pole circular female connector type Binder Series 712 (PLC/Power), 4-pole circular female connector type Binder Series 707 (PC/RS232), 7-pole and 4-pole circular female connectors Binder Series 712 (connection to internal or internal+external lighting unit)
Connecting cables	Connection to PC: cab-las4/PC or cab-las4/PC-w Connection to PLC: cab-las8/SPS or cab-las8/SPS-w Connection to internal lighting unit: cab-las7/4-0,2m Connection to internal+external lighting units: cab-las7/4-y
LED display	LED red (+) : Measuring value > upper tolerance threshold LED green : Measuring window within tolerance window LED red (-) : Measuring value < lower tolerance threshold LED yellow: Voltage indication/visualization teach-process (multifunctional LED)
EMC test acc. to	IEC - 801 ...
Scan frequency	max. 1,4 kHz A/D mode, max. 2,8 kHz comparator mode
Max. switching current	Digital outputs OUT0, OUT1, OUT2: 100 mA, short-circuit proof
Interface	RS232, parameterisable under Windows®



Dimensions



All dimensions in mm

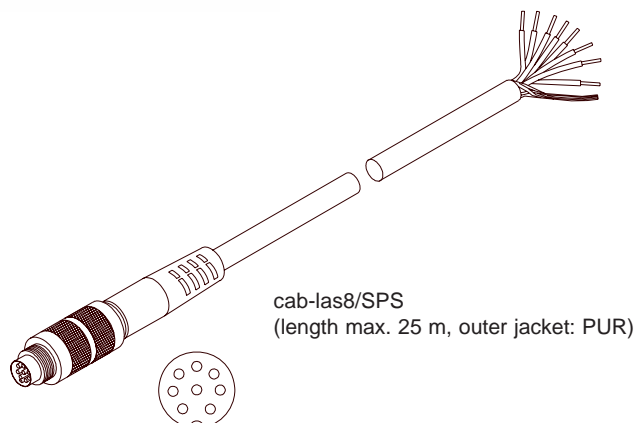


Connector Assignment

Connection to PLC: 8-pole fem. connector Binder Series 712

Pin:	Color:	Assignment:
1	white	GND (0V)
2	brown	+20...+32VDC
3	green	IN0 (EXT TRIGGER)
4	yellow	IN1 (TEACH/RESET)
5	grey	OUT0
6	pink	OUT1
7	blue	OUT2
8	red	ANA (0 ... +10V)

Connecting cable:
cab-las8/SPS or
cab-las8/SPS-w (angle-type 90°)
(standard length 2 m)

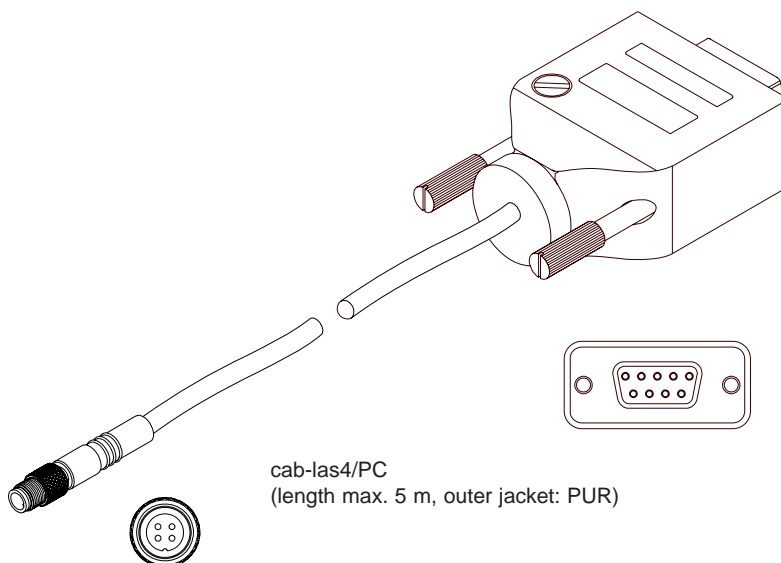


Connection to PC: 4-pole fem. connector Binder Series 707

Pin: Assignment:

1	not connected
2	GND (0V)
3	RxD
4	TxD

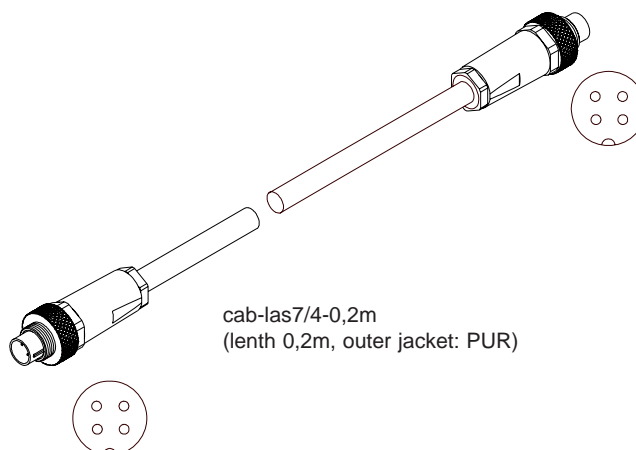
Connecting cable:
cab-las4/PC or
cab-las4/PC-w (angle-type 90°)
(standard length 2 m)



Connection to internal lighting unit 4-pole fem. connector Binder Series 712

Pin:	Assignment:
1	GND (0V)
2	+20... +32VDC
3	I-CONTROL
4	FØTTL (ON/OFF)

Connecting cable:
cab-las7/4-0,2m
(standard length 0,2m)



LED Display

Potentiometer for
tolerance setting

TEACH/RESET button
for set point teaching
(input IN0)



LED red (+):
Measuring value > upper tolerance threshold

LED green:
Measuring value within tolerance windows

LED red (-):
Measuring value < lower tolerance window

LED yellow:
Voltage indication (multifunctional LED)

Windows® Software

Windows® Software L-LAS-RL-Scope:

The L-LAS-RL sensor can be easily parameterised with the Windows® user interface. For this purpose the sensor is connected to the PC with the serial interface cable cab-las4/PC.

When parameterisation is finished, the PC can be disconnected again (press STOP button), the sensor system continues to operate with the current parameters in "stand alone" mode without a PC.

